



CERTIFICATE OF ANALYSIS

20 Martin Ross Avenue, North York, ON, M3J 2K8, CANADA
Tel: (416) 665-9696, Fax: (416) 665-4439
Email: orders.trc@lgcgroup.com Website: www.trc-canada.com

1. Identification

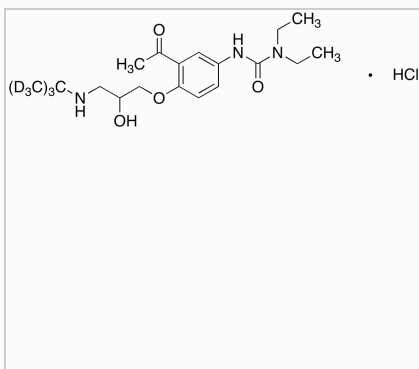
Catalogue Number: C254502

CAS Number: 1215535-20-8

Product: Celiprolol-d9 Hydrochloride

Synonym: N'-[3-Acetyl-4-[3-[(1,1-dimethylethyl-d9)amino]-2-hydroxypropoxy]phenyl]-N,N-diethylurea Hydrochloride; Celectol-d9; Corliprol-d9; NSC 324509-d9; REV 5320A-d9; ST 1396-d9; Selector-d9;

Structure:



Molecular Formula:

C₂₀H₂₅D₉ClN₃O₄

Molecular weight:

425.01

Source of Product:

Synthetic

Solubility:

Methanol (Slightly), Water (Slightly)

Lot Number: 10-SDJ-41-1

Purity: 97%

Shipping Condition: This Product Is Stable To Be Shipped At Room Temperature

Storage Condition: 4°C

2. Warning

Warning 1:

Warning 2:

Warning 3:

3. Analytical Information

| Tests: | Specifications: | Results: |
|------------------|--------------------------|--------------------------|
| Appearance | White to Off-White Solid | White to Off-White Solid |
| NMR | Conforms to Structure | Conforms |
| HPLC Purity | Report Result | 97.05% (235 nm) |
| MS | Conforms to Structure | Conforms |
| Isotopic Purity | >95% | 99.2% |
| Chloride Content | Report Result | 9.4% |

Additional Information: Normalized Intensity: d0 = 0.02%, d1 = 0.00%, d2 = 0.00%, d3 = 0.00%, d4 = 0.00%, d5 = 0.00%, d6 = 0.00%, d7 = 0.20%; d8 = 6.40%, d9 = 93.39%

Purity is based on the analytical results of the tests performed. NMR and Elemental Analysis (if available) may have an accuracy of ± 2%. Isotopic purity is based on mass distribution observed. The contents of the specifications are subject to change without advance notice, and the specification values displayed here are the most up to date values.

4. Signatures

| Reviewed By | Reviewed By | C of A Approved By | Test Date | Retest Date |
|-------------|---------------|---------------------|------------|-------------|
| Henry Tieu | Toni Rantanen | Christina Gouliaras | 11/24/2022 | 11/22/2032 |